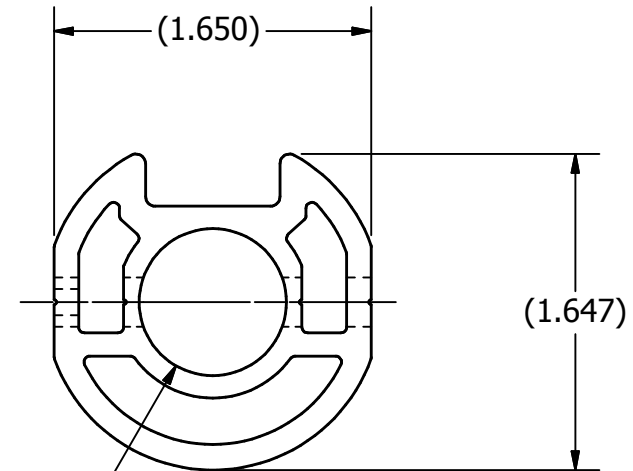
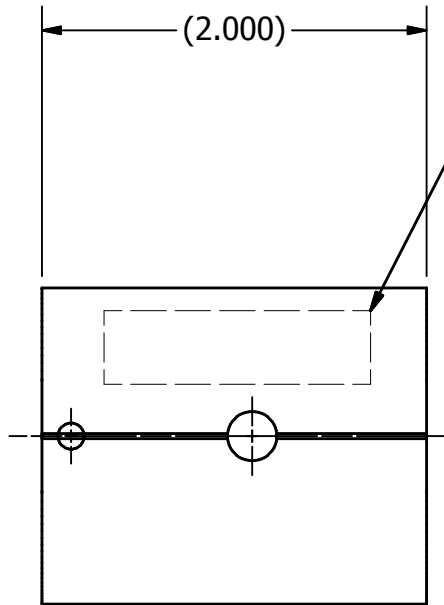


SIZE	DRAWING NO.	SHEET	REV
A	0311-860760	1 OF 1	H

NOTES:

- DO NOT SCALE DRAWING.
- REMOVE ALL BURRS AND SHARP EDGES.
- INDUSTRY STANDARDS AND PRACTICES MUST BE APPLIED IN FABRICATION OF PARTS.
- PART TO BE FREE FROM SURFACE IMPERFECTIONS OTHER THAN SURFACE FINISH REQUIREMENTS.
- CRITICAL DIMENSIONS ARE INDICATED BY: ●
- THIS DRAWING WAS ORIGINATED BY AND IS THE EXCLUSIVE PROPERTY OF AERO INDUSTRIES, INC. AND/OR ITS OWNER. IT IS NOT AN AUTHORIZATION OR LICENSE TO MAKE THIS CONSTRUCTION OR TO FURNISH THIS INFORMATION TO OTHER PARTIES.

STAMP PART #
WITH 1/4" LETTERING,
CUSTOM STAMP



0825-650507
TO BE INSTALLED IN .125 HOLE

REV	DESCRIPTION	BY	DATE
H	DIMENSIONS MOVED TO 0311-860764; ECO #35857-10	JLA	8/17/20
G	ECO#35364; ADDED I.D. STAMP NOTE	CLH	3/25/20
F	CHANGED MATERIAL; ECO #32786-1	JLA	9/27/18
E	DEFINE MATERIAL FINISH	RCM	5-1-13
D	HOLE WAS .136, HOLE DISTANCE WAS .911,	RCM	3-21-13
C	ID WAS .791	RCM	1-11-13
B	ADDED TOLORANCE TO HOLE CENTERS	RCM	7-9-12
REVISIONS			

TOLERANCES UNLESS OTHERWISE SPECIFIED
DIMENSIONS IN INCHES
x/x = ± 1/16
.x = ± .031
.xx = ± .020
.xxx = ± .010
.xxxx = ± .005
ANGLE = ± 1/2°
SURFACE = 125√



MATERIAL NOTE
0311-860764
MATERIAL FINISH
E-COAT BLACK

P:\INVENTOR 2012\0311\0311-860760.idw

**ROLL UP BAR BUSHING
EZ COVER**

SCALE 1:1	DRAWN BY RCM	APPROVED BY	DATE 4/24/2012
SIZE A	DRAWING NO. 0311-860760	SHEET 1 OF 1	REV H